

081/081M General Purpose and Medical Type Filtered Power Entry Modules With Fuse Holder



081 Series

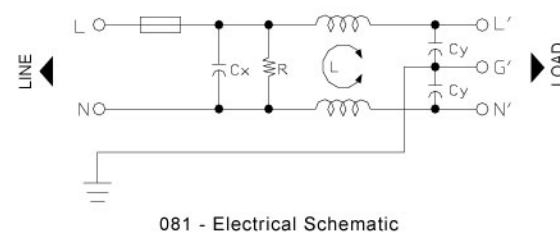
General Purpose Filtered Power Entry Modules with Fuse Holder
Fuse Size 5×20mm Not Included

Features

Compact safety module, easy to use power entry filter with safety fuse.
Available with faston tabs or solder terminals.

Typical Applications

Electronic equipment, network equipment and any other equipment which requires safety fuse.



081M Series

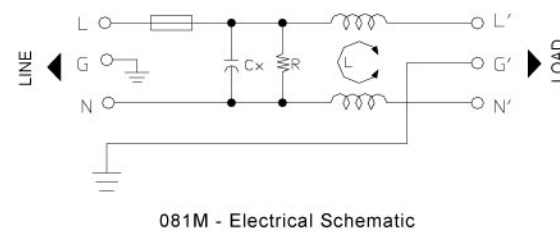
Low Leakage Current Medical Type Filtered Power Entry Modules with Fuse Holder
Fuse Size 5×20mm Not Included

Features

Compact safety module, very low leakage current and easy to use power entry filter with safety fuse. Available with faston tabs or solder terminals.

Typical Applications

Medical type equipment and for medical type applications which requires integrated safety fuse.

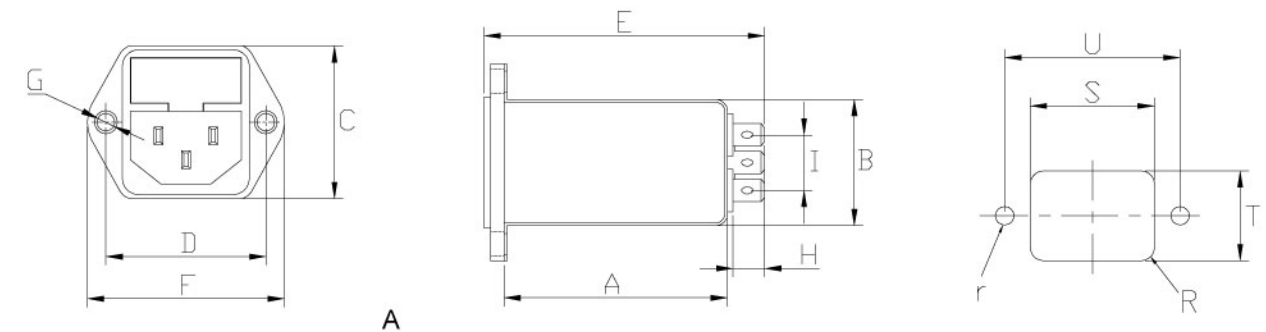


Technical Data

Rated Voltage Max. (V)		Leakage Current 081 Series	
Rated Voltage Max. (V)	250VAC	@ 250 VAC 50 Hz	0.42 mA Max.
Rated Current (A)	1 -10A @ 40°C	@ 115 VAC 60 Hz	0.23 mA Max.
Operating Frequency (Hz)	50 / 60Hz	Leakage Current 081M Series	
Hipot Rating		@ 250 VAC 50 Hz	10µA Max.
Line to Line	1450V DC	@ 115 VAC 60 Hz	5µA Max.
Line to Ground	2250V DC	IP Standard	51-52
Case	Plated steel	Climatic category	25 / 85 / 21
Packaging Quantity	126 pcs per carton		

081 Model No.	081M Model No.	Rated Current @ 40°C	Mechanical Diagram	Unit Weight (g)	Terminal Options	
					In	Out
081.00101.00	081M.00101.00	1.0	A	62.0	IEC Inlet Socket	Faston 6.35*0.8
081.00301.00	081M.00301.00	3.0	A	64.0	IEC Inlet Socket	Faston 6.35*0.8
081.00601.00	081M.00601.00	6.0	A	64.0	IEC Inlet Socket	Faston 6.35*0.8
081.01001.00	081M.01001.00	10.0	A	66.0	IEC Inlet Socket	Faston 6.35*0.8

081 / 081M Mechanical Outlines



081 / 081M Mechanical Dimensions (mm) For reference only

Model No.	Model No.	A	B	C	D	E	F	G	H	I	R	S	T	U	r
081.00101.00	081M.00101.00	50.9	28.5	34.0	36.1	66.0	44.5	2*Φ4.0	8.8	12.0	3.0	29.5	33.5	36.1	2.1
081.00301.00	081M.00301.00	50.9	28.5	34.0	36.1	66.0	44.5	2*Φ4.0	8.8	12.0	3.0	29.5	33.5	36.1	2.1
081.00601.00	081M.00601.00	50.9	28.5	34.0	36.1	66.0	44.5	2*Φ4.0	8.8	12.0	3.0	29.5	33.5	36.1	2.1
081.01001.00	081M.01001.00	50.9	28.5	34.0	36.1	66.0	44.5	2*Φ4.0	8.8	12.0	3.0	29.5	33.5	36.1	2.1

All dimensions in mm, 1 inch=25.4 mm

Insertion Loss in dB Measured in a 50Ω System

Model No.	Common Mode IL (Frequencies in MHz)								Model No.	Common Mode IL (Frequencies in MHz)							
	0.05	0.1	0.15	0.5	1.0	5.0	10.0	30.0		0.05	0.1	0.15	0.5	1.0	5.0	10.0	30.0
081.00101.00	32.0	38.0	41.0	53.0	56.0	55.0	55.0	50.0	081M.00101.00	32.0	38.0	41.0	49.0	51.0	33.0	27.0	17.0
081.00301.00	28.0	34.0	37.0	49.0	51.0	52.0	50.0	50.0	081M.00301.00	28.0	34.0	37.0	45.0	43.0	29.0	23.0	15.0
081.00601.00	16.0	22.0	25.0	35.0	38.0	48.0	48.0	45.0	081M.00601.00	16.0	22.0	25.0	31.0	33.0	29.0	23.0	15.0
081.01001.00	10.0	16.0	18.0	26.0	28.0	42.0	42.0	40.0	081M.01001.00	10.0	16.0	18.0	24.0	26.0	16.0	10.0	8.0

Model No.	Differential Mode IL (Frequencies in MHz)								Model No.	Differential Mode IL (Frequencies in MHz)							
	0.05	0.1	0.15	0.5	1.0	5.0	10.0	30.0		0.05	0.1	0.15	0.5	1.0	5.0	10.0	30.0
081 Series	12.0	14.0	18.0	28.0	32.0	55.0	50.0	50.0	081M Series	12.0	14.0	18.0	28.0	32.0	55.0	50.0	50.0

Line to ground capacitors are available up to 4,700 pF.

Other specifications, requirements and customizations can be offered upon request.